

Household Energy Consumption, Emissions, Pollution, and Health Impacts in India

STATE

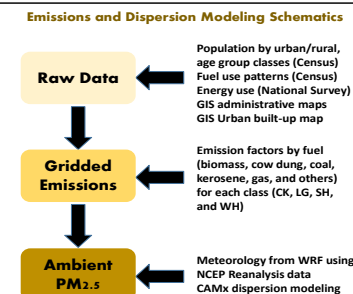
Himachal Pradesh

(state and district as of census-India, 2011)

DISTRICT

Una

Household energy consumption (HEC) emissions were calculated in four classes - cooking (CK), lighting (LG), space heating (SH), and water heating (WH). Bottom-up emissions for the four classes are available @ 0.25 degree spatial resolution, and further aggregated to district and state level. A sub-classification is available by fuel - biomass, coal, kerosene, liquified petroleum gas (LPG), and others.



%Households Primary Cooking Fuel

gas+elec

others

40.1%

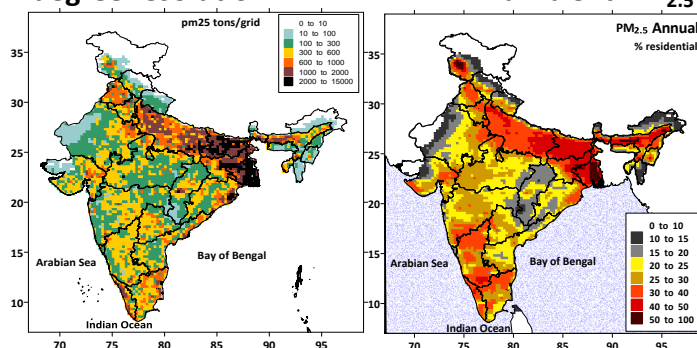
59.9%

Estimated district annual HEC emissions

Paticulates (2.5µm)	1,760 tons
Sulfur dioxide	160 tons
Nitrogen oxides	40 tons
Carbon monoxide	28,400 tons
Hydrocarbons	3,260 tons
Black carbon (BC)	400 tons
Organic carbon	740 tons
Carbon dioxide (CO2)	0.12 mil tons

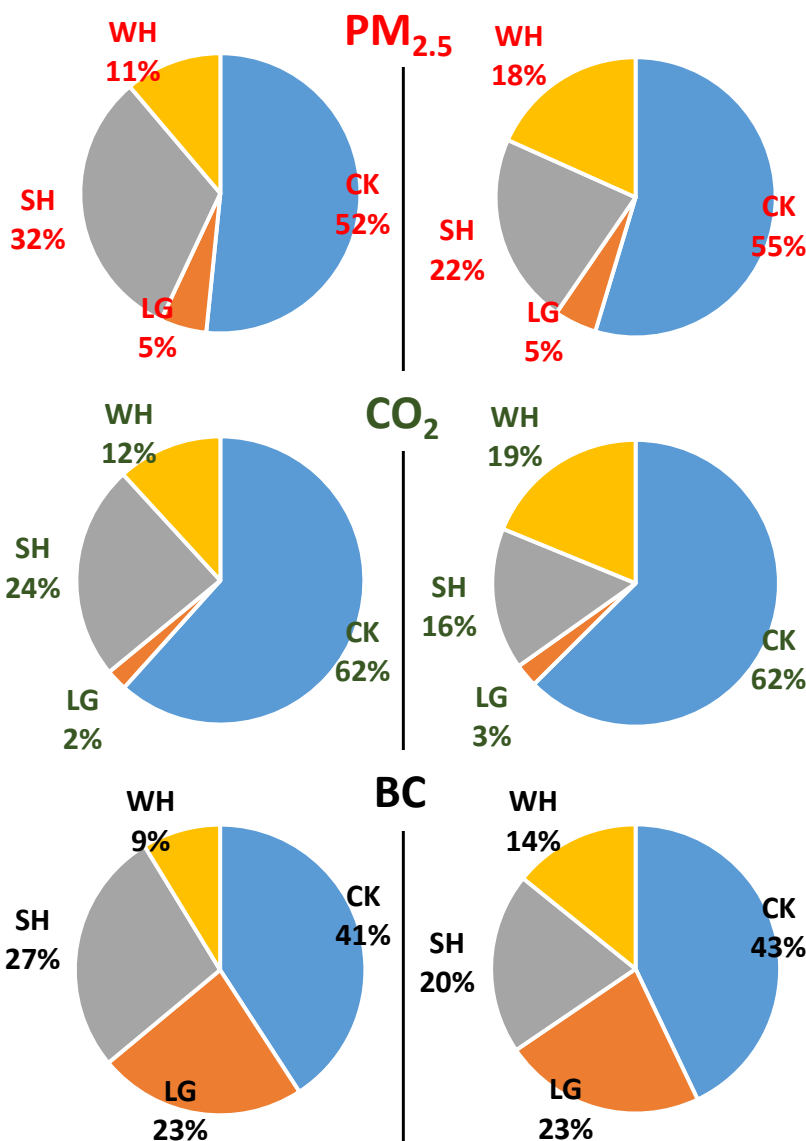
Estimated PM_{2.5} emissions @ 0.25 degree resolution

Modeled share of HEC emissions to ambient PM_{2.5}



DISTRICT EMISSIONS

NATIONAL EMISSIONS



% contribution of HEC emissions to modeled ambient PM_{2.5} concentrations

(concentrations were conducted using the WRF-CAMx models)

National	29.6%
District	30.8%

The health impacts of outdoor air pollution as ischemic heart diseases (which can lead to heart attacks), cerebrovascular disease (which can lead to strokes), chronic obstructive pulmonary diseases, lower respiratory infections, and cancers (in trachea, lungs, and bronchitis) were estimated using the age-dependent relative risk functions detailed in the Global Burden of Disease study and dispersion modeling results from this study. The final calculations were conducted at the district level using the population distribution by age presented in Census-India.

Estimated premature mortality of outdoor air pollution per year - apportioned to HEC emissions

National	84,000 - 115,000
District	23 - 27

Emission and dispersion modeling results, pollution animations, and summary sheets by district and state are hosted @ <http://www.urbanemissions.info>
Send your comments and questions to sim-air@urbanemissions.info